

Pixie and Sprite Features PDF

you get peace of mind
with SIREN MARINE



Table of Contents

Battery Monitoring	2
Bilge Pump Monitoring	2
Track Position and GeoFencing	2
Entry Alert	2
High Water Alarm	3
Shore Power Sensor	3
Anchor Drag Alarm	3
Remote Accessory Control	3
Text Messaging/ iPhone App	4
Temperature Monitoring	4
Alert Four Recipients	4
Internal Reserve Battery	4



Battery Monitoring

One of the core functions of our products is monitoring your battery's condition. Low or dead batteries are one of the most common problems to all boaters. Not only can a flat battery detract from your Saturday, having to get a jump or replacement to start your motor, but can also result in a catastrophic outcome in the event that your boat is taking on water and there is no power to run the bilge pump. Siren Marine reports battery voltage in three ways:

Low Battery Alerts: Receive text alerts when your main battery falls below a preset level. Factory preset on devices are set at 11.8 volts and are easily customizable.

Scheduled Reports: Receive battery voltage status reports daily or as frequently as your want. Scheduled reports are also customizable from 1-99 hours.

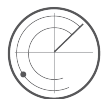
Query at Anytime: Simply text "info" at any time and receive a text back with your battery's precise voltage, and the voltage of your Siren Marine unit's back-up battery.



Bilge Pump Monitor

Protecting against water intrusion into your boat is one of the most common problems, and potentially the most catastrophic, that Siren Marine helps you mitigate. Don't wait until your bilge is full of water to find out there is a problem.

Bilge Pump Over-Run: Siren Marine allows you to set a timer for every time your bilge pump runs more than normal, through measuring the run time of your bilge pumps. Have a bilge cycle of one minute? Set the timer at any time beyond that, and receive a 'bilge pump over-run alert' when your bilge pump is working overtime.



Track Position and GeoFencing

Want to know where your boat is? Our high gain GPS with GeoFencing allows you to see where your boat is at anytime, and more importantly, that it is right where you left it.

Track Position: Leaving your boat untended? You can query the device any time and receive your boat's precise course, speed, longitude, latitude, and position on Google Maps.

GeoFencing: With the GeoFence activated you receive new position updates in the event that your boat is moved or is stolen. Our customizable GeoFence functions as an electronic anchor drag alarm, and begins sending automatic updates as a function of distance or time in the event of unauthorized movement.



Entry Alert

An onboard alarm can scare a thief off and prevent theft. Want to know if someone has entered onto your boat? Our products communicate with a variety of security sensors. With motion sensors, hatch sensors, canvas snap sensors, and/or pressurized mats, you can both set off an alarm and be alerted when security is compromised. Fast response = better security!



High Water Alarm

Every Boater knows the value of a High Water Alarm in preventing a major disaster on their boat. In addition to sounding an audible alarm that may or may not be heard, Siren Marine products go one step further. Our products are designed to be hardwired into existing equipment, and contact people directly in the event that water begins accumulating in the bilge. There are three ways to interface a Siren Marine unit with a High Water Alarm.

Float Switch: When a float switch activates from high water, your Siren Marine unit receives the signal and sends you and three others the high water alert.

Resistance Probe: Connect your device to a resistance probe in the bilge and be alerted if salt water closes the connection

Onboard High Water Alarm: When a high water alarm is activated on the boat, your Siren Marine unit sends you and three others the text alert.



Shore Power Sensor

Plug our 110 volt shore power sensor into an AC outlet and receive an alert if your boat gets disconnected from shore power. In the event your boat gets unplugged, or there is a power outage at the dock, a fast response can protect your asset from loss. Our shore power sensor works with both the Siren Marine Pixie and the Sprite, and comes included in the Sprite package.



Anchor Drag Alarm

Our device provides a low power option to relying on your chart plotter. Receive an instant text message if your anchor drags while you are ashore. Our device can be configured to not only send a text message, but also trigger an audible alarm or strobe in the event that your boat moves.



Remote Accessory Control

Every Siren Marine Device comes standard with two customizable outputs for accessories, giving you control of your boat beyond the harbor. With these outputs you can remotely switch two accessories on or off on your boat through a simple text message. Common uses are:

Solenoid (Remote Battery Switch): With a Siren Marine unit connected to a remote battery switch or solenoid, you can remotely turn the main power on or off on your boat after leaving. Convenient in the event that you have forgotten to turn off an electronic device, and also as a deterrent against theft.

Lights: Remotely turn the spreader/courtesy lights on and avoid walking onto a boat in the dark, or make your boat easier to locate when out on the mooring.

HVAC: Turn the air conditioning on prior to arriving at the marina, and have your boat cool and ready to go at the dock.

Manually Switched Bilge Pumps: With a simple text message switch on a manual switch bilge pump.

Any Onboard Electrical Accessory: Communicates with many other accessories equipped with an on/off switch, ask us how.



Text Messaging / iPhone App

GSM Coverage:

Siren Marine products offer expansive communication through operating on the Global System for Mobile Communication network, the most prolific worldwide cellular network available. Our products work throughout North America, South America, The Caribbean, Europe, The Middle East, Asia, Africa and Australia. Plan to be out of cell coverage? You can set up reports to go to your email address too.

iPhone App & Service Plan:

Our products communicate message and receive commands from up to four text enabled cell phones. SMS commands are intuitive, easy to remember, and easy to execute. Our free iPhone app compiles text commands into an easy to use mobile application, with an android application in development. Our US service plan provides for unlimited messaging for all four phones in a flat affordable rate (yearly and monthly plans available). See our products page for Service Plan details.



Temperature Monitoring

Both our Pixie and Sprite come equipped with their own temperature monitor, allowing you to monitor onboard temperature at any time. In addition to on-the-go temperature monitoring, high and low temperature alarms can also be set, and the record high and record low temperatures are stored.

Ambient Temperature Monitoring:

Our Pixie comes equipped with its own internal ambient temperature monitor, providing a room temperature reading of wherever your unit is installed.

Spot Temperature Monitoring:

Our Sprite comes standard with a 9 foot spot temperature probe, providing you the flexibility to monitor a bait freezer, refrigerator, engine room, or separate compartment. Know when the temperature in your bait freezer or refrigerator rises, and avoid arriving to spoiled food or bait on your boat.



Alert Four Recipients

Siren Marine products are configured to receive commands and report alerts to up to four cell phones or email addresses.

Simply input a spouse, sibling, or dockmaster's cell phone number into your electronic boat monitor's recipient list, and all four people will have 24-hour direct communication to and from the device. Plan on being out of the country? Alerts and reports can be delivered to an email address in place of a cell phone.



Internal Reserve Battery

Each Siren Marine unit comes equipped with its own reserve Lithium-Ion battery, which provide reserve power in the event that the main battery dies. Should this happen, your Siren Marine unit will continue to monitor the boat's vital systems for an additional 48 hours independent of the main battery. Rest assured knowing that you can still monitor the vital systems on your boat, and track its movements even with a dead battery.